

HIMSS10 Annual Conference & Exhibition: March 1-4, 2010

HIMSS 10 Interoperability Showcase: March 1-3, 2010

Atlanta, Georgia – World Congress Center

**HIMSS10 Interoperability Showcase Monthly Info & Planning Webinars:
Monthly Webinar #2: Thur November 19 & Friday November 20, 2009**

HIMSS Interoperability Showcase Team

interoperabilityshowcase@himss.org

Todd Cooper, Consultant, PCD

Lynn Felhofer, NA Connectathon Tech PM

Manny Furst, Consultant, PCD Technical PM

John Donnelly, Consultant, Showcase Technical PM

Lori Fourquet, Consultant, IS Planning Committee

Allie Grassie, ISPC

Michael Glickman, Consultant, IS Planning Committee

Glen Marshall, ISPC

Steve Moore, NA Connectathon Tech PM

Shelley Melanson, Pegasus Productions

Michael Nusbaum, Consultant, IS Planning Committee

Celina Roth, IHE Manager, HIMSS

Joyce Sensmeier, VP, HIMSS

Mark Schofield, Showcase Manager

Lisa Spellman, Senior Director, HIMSS

Larry Wolf, ISPC

Teresa Wisdom, HIMSS-HITSP

Bob Yench, Consultant, HITSP

And many more...

Webinar Agenda Overview

Big Picture & General Marketing / Logistics – Part I

PART I

Primary Speakers

Lisa Spellman: Senior Director, Informatics,
IHE Staff Liaison, HIMSS

Celina Roth; Manager Informatics

- **Webinar Agenda Overview for Parts I & II**
- **Welcome**
- **Purpose of these Webinars**
- **Key Upcoming Dates & Activities**
- **Brief Visuals – Showcase Booth**
- **Communications Tools**
 - Marketing & Technical & General
- **ISC10 Guidelines Documents**
 - Google Groups & Websites
 - Where & How-To in *Guidelines*
- **Q&A for Part I**

PART II

Primary Speaker

John Donnelly: ISC10 Technical Project
Manager

- **Webinar Agenda Overview for Part II**
- **Themes & Scenarios**
- **System Categories**
- **Participant Priority Process**
- **Virtual Testing**
- **And more**
- **Q&A for Part II**

As a Quick Reminder...
Content that was Covered in Oct Webinars
Big Picture & General Marketing / Logistics – Parts I & II

- **About Interop Showcases-high level**
 - Located worldwide
 - Draw thousands annually
 - Reach buyers, end users, legislators, media and many others
- **Major Showcase Components / Areas**
 - “Front of the House”
 - Demonstration areas
 - Help Desk and more...
- **Cycles – high level overview**
 - Showcase, IHE, HISTP
- **ISC10 *Guidelines* Documents**
- **Communications**
 - Google Groups & Websites
 - How-To in *Guidelines*
 - Monthly Overview Webinars
 - Where & How-To – in *Guidelines*
 - Marketing Webinars

- **John Donnelly:** Showcase Technical PM
- **Manny Furst:** PCD Technical PM
- **Lori Fourquet:** HITSP & related lead

2010 NA Connectathon prep – high level

- Reg & Add / Drop is complete
- Mesa tests should be underway
- Showcase Prep at Connectathon begins Wed Jan 13 in later afternoon / evening through Fri Jan 15
- HITSP & PCD - testing & related prep

HIMSS10 IS Prep

- Scenarios, Technical Webinars
- And much more...

Links to content covered in Oct Webinars

Big Picture & General Marketing / Logistics – Parts I & II

Link to recording & Slides

Monthly Webinar: October 22 & 23, 2009

www.interoperabilityshowcase.com/himss10/planningWebinars.asp

Link to recording & Slides

HIMSS10 Interop Showcase Marketing Toolkit Webinar #1 - October 28, 2009

www.interoperabilityshowcase.com/himss10/marketingtoolkit.asp#webinars

Intended Audiences & Purpose for these Monthly Webinars

- **Audiences**
 - All participants
 - Technical & Marketing
- **Purpose is to provide ...**
 - A predictable 1x/month “touch base” for *all* participants
 - Technical & Marketing
- **Reminder for**
 - Key Dates
 - Deliverables
 - Other activities
- **Inform about changes / revisions**
- **Or in other words...**
 - Right & Left hand management & Coordination!



ISC10 Guidelines Documents Review

Keep your version close at hand

- **Each participation level has a document**

- *Guidelines for Leadership*
- *Guidelines for Implementer*
- *Guidelines for Organizational*
- *Guidelines for Supporter*

- **Details for all critical areas, including...**

- Logo deadline was Oct 28
- Showcase Theater Drafts & Final [Leadership & Organization only]
- White Paper / Success Story
 - Leadership, Implementer, Organization
- Video Production....Pegasus
 - How to reach & Deadlines
 - Special Tours Process

- **GoogleGroups sign-up**

- **Info & registration links for all monthly webinars**

- **Virtual Showcase testing dates & requirements**

- **On-site in Atlanta details, including**

- When to arrive & mandatory Showcase staffing hours

- **IHE 2010 NA Connectathon reminders for major tasks**

- **And more...**

- **Missing yours? Email interoperabilityshowcase@HIMSS.Org**

Schedule at a Glance is available in Google Groups

HIMSS10 Showcase Schedule at a Glance 2009_11_12.doc - Microsoft Word

File Edit View Insert Format Tools Table Window Help Adobe PDF Acrobat Comments WebEx Type a question for help

Final Showing Markup Show

Normal Candara 12

HIMSS¹⁰
Annual Conference & Exhibition
MARCH 1-4, 2010 / ATLANTA

iHE *changing the way healthcare connects*
www.ihe.net

HIMSS10 Annual Conference & Exhibition: March 1-4, 2010
HIMSS10 Interoperability Showcase: March 1-3, 2010

*HIMSS10 Interoperability Showcase
Schedule at a Glance*

| Date | Deliverable | Level of Participation |
|--|--|-----------------------------|
| OCTOBER | | |
| Thurs October 22, 2009 | Monthly Mandatory Planning Webinar #1 | All Levels |
| Fri October 23, 2009 | Monthly Mandatory Planning Webinar #1 | All Levels |
| Wed October 28, 2009 | Participant Logo deadline | All Levels |
| Fri October 30, 2009 | Showcase Free Marketing Webinar | All Levels |
| NOVEMBER | | |
| Mon November 2, 2009 | Early Submission of Showcase Theater Title | Leadership / Organizational |
| Thurs November 12, 2009 (Extension) | Early Submission of Showcase Theater Title | Leadership / Organizational |
| Thurs November 19, 2009 | Monthly Mandatory Planning Webinar #2 | All Levels |
| Fri November 20, 2009 | Monthly Mandatory Planning Webinar #2 | All Levels |

Page 1 Sec 1 1/2 At 4.6" Ln 11 Col 1 REC TRK EXT OVR English (U.S.)

Key Upcoming Dates, Deliverables & Other Activities

Note: Participants are responsible to know all dates & deliverables

| DATE | DELIVERABLE / ACTIVITY | WHO | WHERE |
|----------------------------|---|---|--|
| Dec 2010 | Virtual Connectathon Testing [Note: Dates may well change – see Google Group for Connectathon] | All Connected Demonstration Participants | Should already have info from Connectathon Team – Steve and Lynn |
| Wed Dec 9th | (1) Deadline - Showcase Theater Title (2) First draft of Showcase Theater Presentation due | Leadership & Organizational | See <i>Guidelines</i> for all details |
| | (3) First draft of White Paper / Success Story due | Leadership; Implementer; Organizational | See <i>Guidelines</i> for all details |
| Mon Dec 14th | Free Webinar - Marketing Resources for ISC10 Participants | Marketing leads from all participating entities | Registration info will be sent via GoogleGroups |
| Thur Dec 17 & Fri Dec 18th | Monthly Mandatory Planning Webinar #3 | Everyone! | Registration info will be sent via GoogleGroups |
| Thur Dec 17th | Showcase Free Marketing Webinar: <i>Maximizing your Showcase Presence</i> | Everyone! | Registration info will be sent via GoogleGroups |

Major Showcase Components

Brief Reminder & for New Participants

1. “Front of the House”

- Showcase Theaters
- Information & Help Desks
- Tour Signs and other related items

2. Demonstration Areas

- Connected Demonstration
- Patient Care Devices
- New Directions

3. Organizational Kiosks

4. Distributed Demonstration [Leadership only]



Major Showcase Components

Front of the House

“Front of the House”

- Showcase Theaters
- Info & Help Desks
- Tour Signs and other related items



Major Showcase Components

Front of the House 2



Major Showcase Components

Demonstration Areas: Demonstration Area

- Connected Demo
- New Directions



Major Showcase Components

Demonstration Areas: Demonstration Area- Main Floor



Major Showcase Components

Demonstration Areas: Patient Care Devices (PCD) New Directions



Major Showcase Components

Demonstration Areas: Patient Care Devices (PCD)



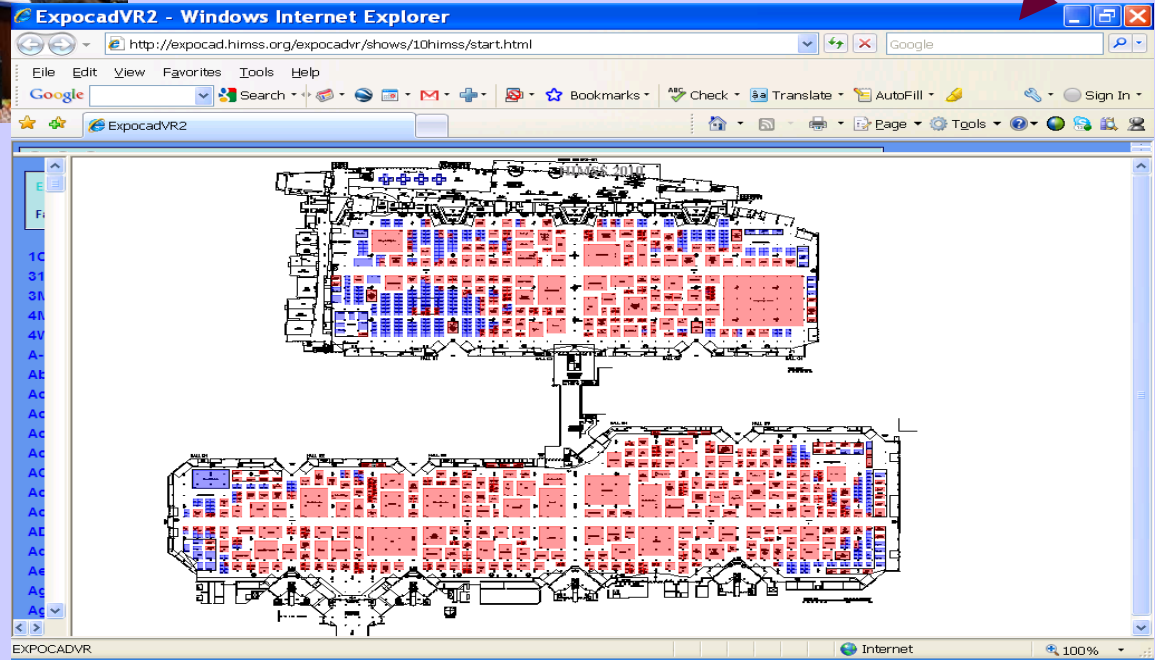
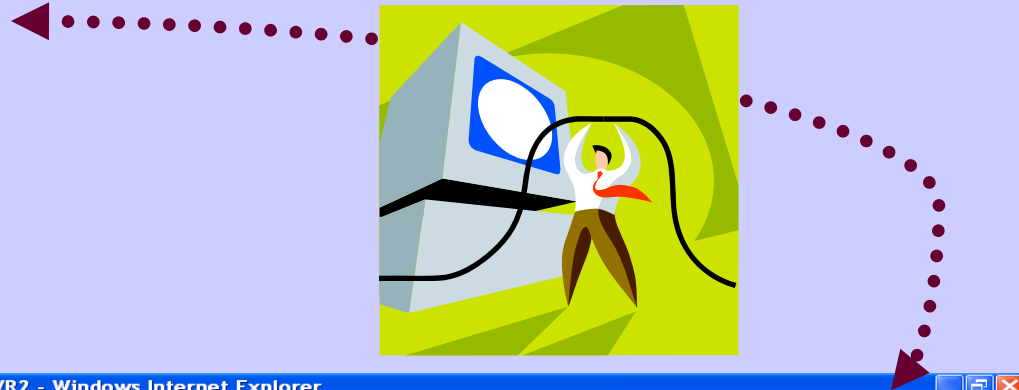
Major Showcase Components

Organizational Kiosks



Major Showcase Components

Distributed Demonstration-Leadership Only



Communications Tools Overview

Celina Roth; Manager Informatics

● **Google Groups**

- *All files are posted here first. Sign-up for an account [here](#).*
- *Recent posts [HIMSS10 Showcase Schedule at a Glance](#)*

● **Website Resources at www.interoperabilityshowcase.org**

- [Participant Guidelines](#)
- [Marketing Tool Kit](#)
- [Showcase Planning Webinars](#)
- [Sign-up for Showcase Google Groups](#)
- [HIMSS10 Showcase Schedule at a Glance](#)

● **White Paper / Success Stories & Showcase Theater deadlines approaching**

- See the Marketing Toolkit on the Showcase Website

Questions?

To learn more, detailed webinars that cover Connectathon Process + Domain Management

June 11, 2009 recorded webinar

- Overview - IHE 2010 NA Connectathon & HIMSS10 U.S. Interop Showcase
- Registration, due dates, timelines and requirements
- ([pdf](#) | [flash](#))

June 18, 2009 webinar

IHE Connectathon First-Timers Session:

- Essentials for IHE implementers
 - How to read the IHE Technical Frameworks
 - Connectathon Registration How-To
 - And more...
- ([pdf](#) | [flash](#))

All sessions available at
www.ihe.net/Events/webinars2009.cfm

For the IHE 2010 NA Connectathon

- Steve Moore: moores@mir.wustl.edu
- Lynn Felhofer: felhofer@charter.net
- Eric Poiseau: eric.poiseau@inria.fr

HIMSS Showcase - general

General Interop Showcase mailbox –
interoperabilityshowcase@himss.org

**General phone for HIMSS Interop
Showcase Team**

+1 (312) +1.312.915.9276

- John Donnelly
 - jtdonnelly@intepro.biz
- Manny Furst [PCD]
 - efurst@imp-tech.com